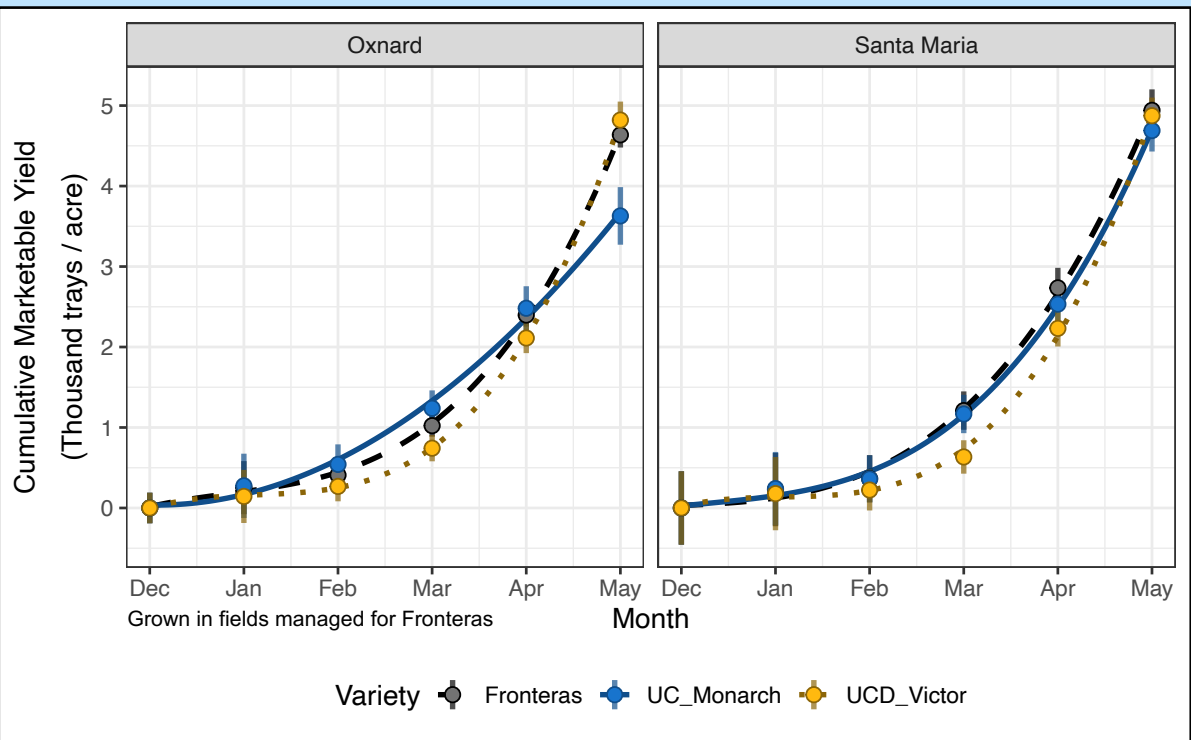


UC Monarch

Short Day
Fall Planted, Early Dig



Comparable yields to Fronteras when established without supplemental chill in early October.

Compact plant with long truss, **easier to pick** than Fronteras.

Firm, flavorful and **excellent shelf-life**, superior to Fronteras (30% increase).

Performance and Quality

Variety	Marketable Yield (Thousand trays / acre)						Marketable Fruit Size (g / fruit)			Brix (%)	Firmness (gf)
	Early		April		May		Early	April	May	Sweetness	Shelf-life
	OX	SM	OX	SM	OX	SM					
Monarch	1.2	1.2	2.5	2.5	3.6	4.7	28	25	23	7.5	322
Fronteras	1.0	1.2	2.4	2.7	4.6	4.9	37	34	25	7.3	254
Victor	0.7	0.6	2.1	2.2	4.8	4.9	35	31	25	7.9	297

Trays per acre calculated as the average g / plant multiplied by 24,000 for OX and SM.
Fruit size, brix, and fruit firmness are calculated as the average between both OX and SM districts.

Resistant to **Fusarium** and **Phytophthora**, superior to Fronteras.

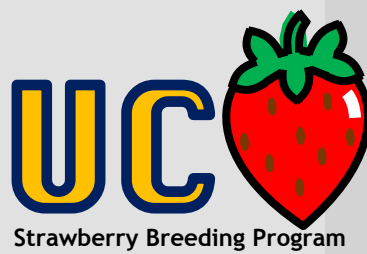
Moderate resistance to **Verticillium** and **Neopestalotiopsis**, similar to Fronteras and Victor.

Disease Resistances

Variety	FW R1	MAC	VW	PhCR	FW R2	NPT
Monarch	1.6	3.1	2.6	2.0	4.9	2.9
Fronteras	1.2	3.8	2.5	2.4	5.0	2.5
Victor	1.2	4.3	2.8	2.0	5.0	2.1

FW R1 = Fusarium Wilt Race 1; **MAC** = Macrophomina Charcoal Rot; **VW** = Verticillium Wilt; **PhCR** = Phytophthora Crown Rot; **FW R2** = Fusarium Wilt Race 2; **NPT** = Neopestalotiopsis Leaf Spot.

1 = Resistant, asymptomatic; 2 = moderately resistant, mild symptoms; 3 = moderately susceptible, apparent symptoms; 4-5 = susceptible, dead. Scale applies to all diseases.



Plants are available from **All Licensed Nurseries** for **Fall Planting 2025**.
The following data were collected during the 2019-2024 production seasons in Santa Maria, CA and Oxnard, CA. Trials have typically been established in the first two weeks of October without supplemental chill.



Contact Information
Mitchell Feldmann
mjfeldmann@ucdavis.edu
Isaac Rainwater
isarainwater@ucdavis.edu