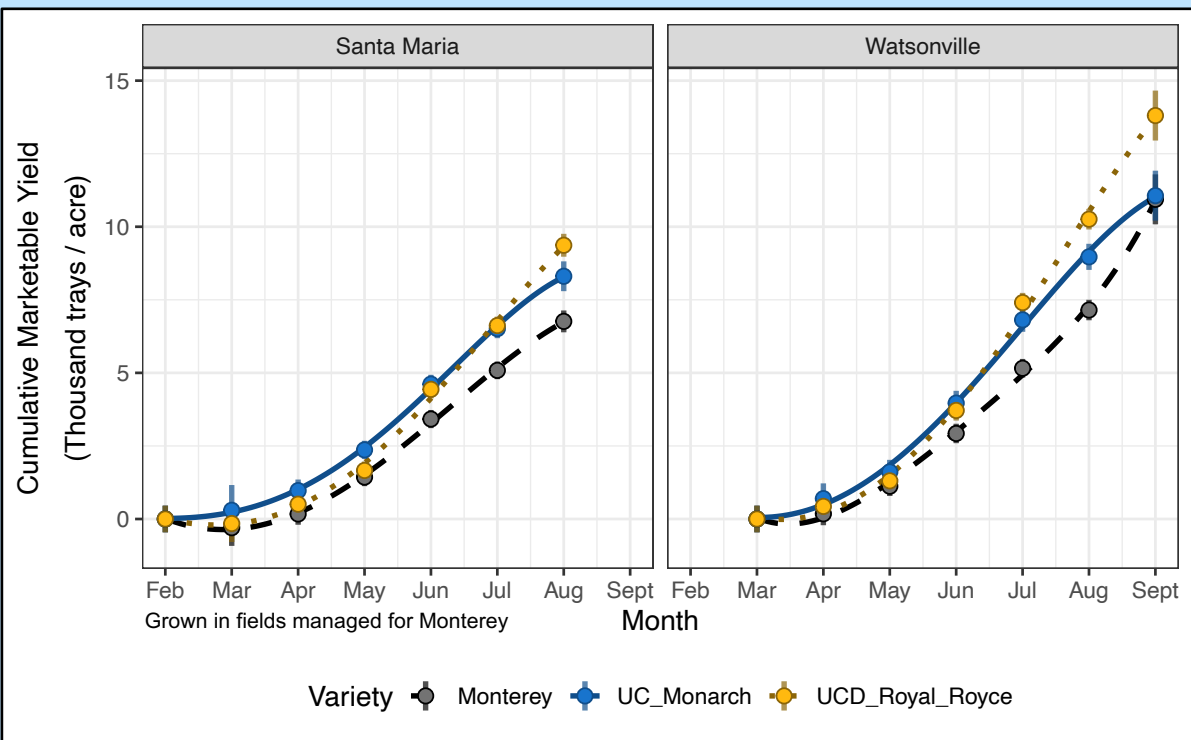


UC Monarch

Short Day
Fall Planted, Late Dig



Early yielding and outperforming Monterey when cultivated like Monterey with extended in-field chill (5-15% increase).

Compact plant with long truss, **easier to pick w/ fewer runners** than Monterey.

Firm, flavorful and **excellent shelf-life, superior to Monterey** (30% increase).

Performance and Quality

Variety	Marketable Yield (Thousand trays / acre)						Marketable Fruit Size (g / fruit)			Brix (%)	Firmness (gf)
	May		June		Total		May	June	End	Sweetness	Shelf-life
	SM	W	SM	W	SM	W					
Monarch	2.4	1.6	4.6	4.0	8.3	11.1	32	25	21	8.3	307
Monterey	1.7	1.2	3.6	3.1	7.3	11.1	37	29	25	9.1	242
Royal Royce	1.8	0.8	4.4	3.2	9.0	13.9	37	30	24	7.8	325

Trays per acre calculated as average g / plant multiplied by 24,000 and 14,000 plant / acre for SM and W, respectively. Fruit size, brix, and fruit firmness are calculated as the average between both SM and W districts.

Disease Resistances

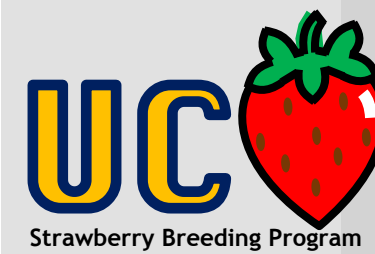
Variety	FW R1	MAC	VW	PhCR	FW R2	NPT
Monarch	1.6	3.1	2.6	2.0	4.9	2.9
Monterey	3.4	4.1	2.6	3.1	5.0	2.7
Royal Royce	3.8	3.5	2.8	2.7	4.9	3.0

FW R1 = Fusarium Wilt Race 1; **MAC** = Macrophomina Charcoal Rot; **VW** = Verticillium Wilt; **PhCR** = Phytophthora Crown Rot; **FW R2** = Fusarium Wilt Race 2; **NPT** = Neopestalotiopsis Leaf Spot.

1 = Resistant, asymptomatic; 2 = moderately resistant, mild symptoms; 3 = moderately susceptible, apparent symptoms; 4-5 = susceptible, dead. Scale applies to all diseases.

Resistant to Fusarium, Phytophthora.

Moderate resistance to **Verticillium** and **Neopestalotiopsis**, strong improvement over Monterey and Cabrillo.



Plants are available from **All Licensed Nurseries** for **Fall Planting 2025.**

The following data were collected during the 2019-2024 production seasons in Santa Maria and Lompoc, CA and Watsonville, CA. Trials have typically been established in the last week of October without supplemental chill, or in the first weeks of November with supplemental chill.



Contact Information
Mitchell Feldmann
mjfeldmann@ucdavis.edu
Isaac Rainwater
isarinwater@ucdavis.edu