

# Research Administration Forum

## Animal Care Program

**UCDAVIS**

**RESEARCH AND TEACHING  
ANIMAL CARE PROGRAM**





# Vision

Ensuring people and animals live healthier lives through the judicious, respectful use of animal models

# Mission

Foster a culture of excellence by providing the highest standard of care for our research and teaching animals while providing exemplary support to our investigators, staff and students working with those animals

# University of California, Davis

## Animal Care and Use Program Facilities

### Office of Research

1. Campus Veterinary Services Clinic
2. Teacher and Research Animal Care Services (TRACS)
3. Bodega Marine Laboratory (BML), (Bodega, CA)
4. Center for Health and the Environment (CHE)
5. California National Primate Research Center (CNPRC)
  - a. Respiratory Disease Center
6. John Muir Institute of the Environment (JMIE) – Quail Ridge Reserve (Napa, CA)

### School of Veterinary Medicine

7. California Animal Health and Food Safety (CAHFS), (San Bernardino, CA)
8. California Raptor Center
9. Center for Equine Health (CEH)
10. Feline Nutrition and Pet Care Center (FNPPC)
11. Feline Research Laboratory (FRL)
12. Foley Research Areas (J. Foley)
  - i. Foley Field Pens
  - ii. Amargosa Vole Facility
13. Gourley Clinical Teaching Center
14. Arbovirus Research Laboratory (L. Coffey)
15. Lein Fish Facility (P. Lein)
16. Pasture Poultry (M. Pitesky)
17. Veterinary Medicine 3B Aquatic Health Biology (S. Teh)
18. Poultry Medicine J1 Facility (R. Gallardo)
19. Mouse Biology Program (MBP)
  - i. M3 Barrier
  - ii. 2<sup>nd</sup> Street
  - iii. J2
20. Veterinary Medicine Teaching Hospital
  - i. Small Animal
  - ii. Large Animal
21. Veterinary Medicine Teaching and Research Center (Tulare, CA)

### College of Agricultural & Environmental Sciences

22. Center for Aquatic Biology and Aquaculture (CABA)
23. Department of Animal Science
24. Nutrition/Environmental Toxicology
25. Wildlife Fish and Conservation Biology (WFCB) – Aquatics (N. Fangue)
  - a. Wildlife Fish and Conservation Biology (WFCB) – Hydraulics Laboratory (N. Fangue)
26. Wildlife Fish and Conservation Biology (WFCB) – Temporary Building- 1 (J. Eadie)
27. Desert Research Extension Center (DREC), (El Centro, CA)
28. Fish Conservation and Culture Laboratory (FCCL), (Byron, CA)
29. Hopland Research Extension Center (Brown's Valley, CA)
30. Garter Snake Facility (B. Todd)
31. Olney Land and Cattle (Maxwell, CA)
32. Granite Canyon Marine Lab (Monterey, CA)

### College of Letters & Science

33. Psychology Young Hall
  - a. Psychology Field Pens (L. Krubitzer)
34. Center for Neuroscience (CNS) Learning and Memory Center (B. Wiltgen)

### School of Medicine

35. Institute for Regenerative Cures (IRC)
36. Research II
37. Med Surgery H1
38. Tupper Hall – Xenopus Facility (N. Marsh – Armstrong)
39. Tupper Hall – Zebrafish Facility (L. Jao)
40. Caldecott Tunnel (K. Bain)

### College of Biological Sciences

41. Chronic Acceleration Research Unit (CARU) (C. Fuller)
42. Department of Evolution and Ecology (P. Wainwright)
43. Molecular and Cellular Biology – Zebrafish (B. Draper)
44. Department of Neurobiology, Physiology and Behavior (NPB) – Aquatics (D. Furlow)
45. Department of Neurobiology, Physiology and Behavior (NPB) – Avianies (T. Coombs – Hahn, R. Calisi, J. Wingfield)

### Office of Student Affairs

46. Memorial Union Equestrian Center







# Animal Care Program



- Includes all the research and teaching animals housed on and off campus
- 46 separate functional units (vivaria)
- Over 250 buildings
- Over 300 outdoor pens/pastures
- Approximately one million square feet of space

# Animal Care Program



- Of the 46 functional units
  - 35 are on the Sacramento and Davis Campus
    - 12 house rodents
      - 4 of these are investigator maintained
  - 16 house aquatics
  - 5 house chickens
  - 4 house horses (3 different departments)
  - 4 house cats
  - 2 house non-human primates



# Animal Care Program



- Of the 46 functional units
  - Desert Research Extension Center, El Centro
  - Range lands at the Folsom Prison, Vacaville Detention Center
  - Bodega Bay Marine Laboratory
  - CAHFS, San Bernadino
  - Caldecott Tunnel



# Investigator and Support Staff



- Over 500 investigators
- Approximately 3,000 support staff
- Over 1500 IACUC protocols





# Program Scope

- Over 5 million animals covered by protocols
  - 4.5 million fish
  - 500,000 frogs
  - 83,000 mice
  - 8,000 rats
  - 4,100 nonhuman primates
  - 2,800 Cows
  - 1,300 Dogs
  - 1,000 Horses
  - 900 Sheep
  - 750 Cats



# Program Scope



- 23.6% of the grant dollars coming to campus involve animal research
- 2018
  - \$199,715,845
  - Total grant dollars
    - 846,723,001



# Commitment



- 325 FTE covering animal care
- Includes 33 Veterinarians
- Provide clinical and pathology services
  - 9 of whom are ACLAM diplomates
  - 12 others are board certified in other fields





# Structure



- Institutional Official
  - Ultimate responsibility
  - Vice Chancellor for Research
- Attending Veterinarian
  - Responsible for animal health and well being



# Structure



- IACUC
  - Responsible for the assessment and oversight of the program components and facilities
  - Large committee and staff
  - Director and Assistant Director



# Regulations and Guidelines



- Animal Welfare Act
- Public Health Service Policy
- Guide for the Care and Use of Laboratory Animals
- Guide for the Care and Use of Agricultural Animals in Research and Teaching
- US and California Departments of Fish and Wildlife

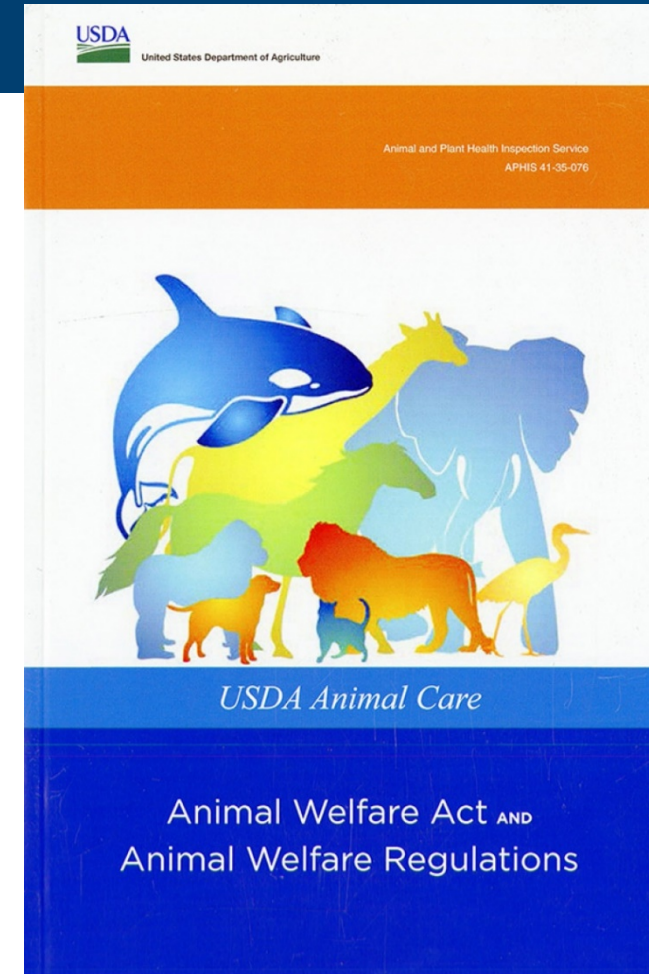




# Regulations and Guidelines



- Animal Welfare Act
  - Covers mammals with the exception of mice, rats bred for research, birds and agricultural animals used in research for food and fiber
  - Unannounced inspections
  - Financial, Legal



# Regulations and Guidelines



- Public Health Service Policy
  - Covers all animals for which NIH funding is supporting
- Administrated by OLAW
  - Office of Laboratory Animal Welfare



# AAALAC, Int



- Voluntary Accreditation
  - UCOP mandates that all UC campuses are accredited
- Site visits every three years
- Currently approximately 1000 accredited facilities worldwide
- UCD first accredited in 1966
  - Unit number 29







# AAALAC Site Visit

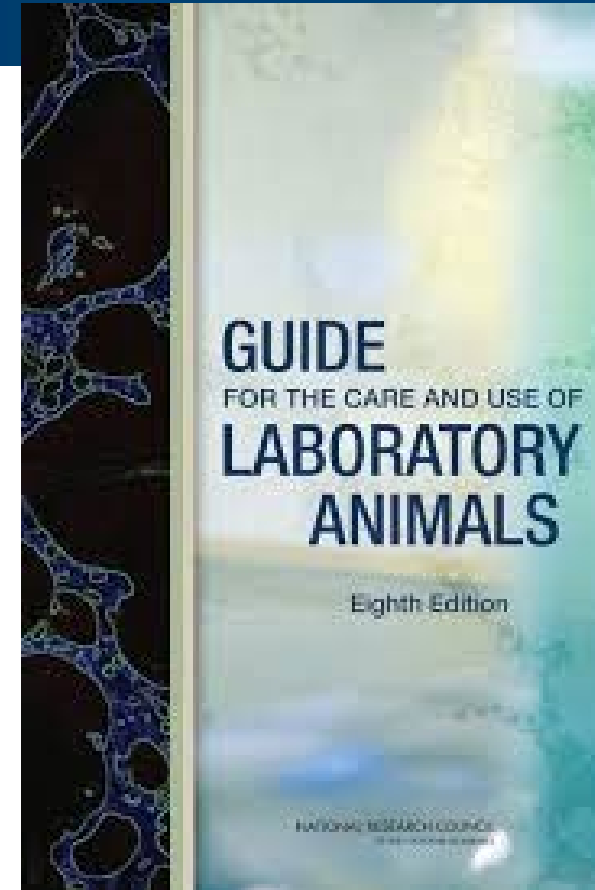
- September 30- October 4
- 2 months and 5 days
  - Busily working on the program description
    - Due in 8 days



# Guide



- Gold standard
- 5 chapters, 220 pages
- Must, should and may statements
  - 49 musts
  - 684 should
  - 393 may



# Financial Support



- Central Cage Wash Facility
  - Campus has fully subsidized
    - 14.6 million
  - Broke ground February 2017
  - Operating May 2018
  - Allowed shut down of two inefficient cage wash facilities
    - Tupper August 2018
    - HQ February 2019





# Rodent Health Surveillance



- Ensures health status of all rodents on campus
  - Routine disease surveillance
  - Monitoring incoming animals
  - Assessing vendors for appropriate health status
  - Ensures biosecurity room order



# Financial Support



- Rodent Health Surveillance
  - 1.4M
  - Added in Furmite and Pinworm screening
  - Added in Mouse Kidney Parvo Virus





# Thank Research

If.  you take  medicine to treat allergies • your  doesn't have fleas • your grandmother has a new hip • you've taken medicine to stop an ache • you've never had the measles • you've never breathed with the help of an iron lung • you don't know what bubonic plague is • you control your diabetes with insulin • you take vitamins • your dad has recovered from a heart attack  your great aunt survived breast cancer • your doesn't have feline leukemia • your grandpa has had bypass surgery • your friend has had a stem cell transplant  you've had a broken repaired • your don't have ulcers • you've had an operation and you slept through the whole thing • **you feel great today!!!!**

*Celebrating the people, the process and the promise*

**STATES UNITED FOR BIOMEDICAL RESEARCH**

AL • AZ • CA • CT • DE • FL • GA • HI • IL • IN • IA • KS • KY • LA • MA • MD • ME • MI • MN • MO • MS • MT • NC • NE • NH • NJ • NY • OH • OK • OR • PA • RI • SC • SD • TN • TX • VA • VT • WA • WI • WY

[www.statesforbiomed.org](http://www.statesforbiomed.org)

**UC DAVIS**

RESEARCH AND TEACHING  
ANIMAL CARE PROGRAM

